

MANUAL - INFLATABLE PERSONAL FLOATATION DEVICE

marlin OWNERS MANUAL

LEVEL 100/100N
LEVEL 150/75N
LEVEL 150/150N
LEVEL 150/200N
LEVEL 275/275N

Certified Product



Australian
Standard
SAI GLOBAL
AS2227:2006

Certified Product



Australian
Standard
SAI GLOBAL
AS4758.1:2008
SMK40048
SMK40031

CONTENTS

GENERAL INFORMATION	3
Specifications.....	4
Wear Your PFD.....	9
Additional Information	10
CO2 Permeation Loss.....	10
Freezing Temperatures	10
OPERATION OF YOUR PFD	13
Instructions For Use.....	13
Pre-donning Instructions:.....	13
Donning Instructions.....	14
Inflated Donning Instructions	15
Inflation Instructions	15
Harness Fit and Sizing Information.....	19
CARE AND MAINTENANCE	21
Is Your PFD in Good.....	21
And Serviceable Condition?	21
General Product Life Expectancy	21
Users Inspection	21
Care and Cleaning Instruction.....	23
Re-arming Kits.....	24
Test your PFD using	25
Manual Inflator?	25
SELF SERVICE INSTRUCTIONS	31
SERVICE CENTERS & AGENTS	39

GENERAL INFORMATION

Approval Conditions

Level 100/100N, Level 150/150N, Level 150/200N and Level 275/280N Personal Flotation Devices (PFD) have been accepted by Australian Marine Ports and Authorities for recreational boating and some commercial usage.

Inflatable PFDs are not recommended for water skiing or other high impact, high speed activities. This inflatable PFD was designed to be more comfortable and less restrictive to wear than inherently buoyancy PFD. When worn, used and serviced according to this owner's manual this PFD can greatly increase your chances of survival in the water.

This PFD shall not exhibit deterioration that could diminish its performance such as broken or deformed hardware, detached webbing, rotted structural components, air leaks or non functional oral tube. Unless worn inflated, this PFD must be properly armed with a full CO2 cylinder. This PFD is "Manual ONLY" and requires a Cylinder and green re-arm clip to be in place to operate.

**WEAK OR NON SWIMMER
SHOULD NOT USE THIS DEVICE
UNLESS WORN INFLATED.**

**FAILURE TO FOLLOW THESE
INSTRUCTIONS COULD
RESULT IN INJURY OR DEATH**



Australian
Standard
SAI GLOBAL
AS2227:2006



Australian
Standard
SAI GLOBAL
AS4758.1:2008
SMK40048
SMK40031

Specifications

Chest Size:

Adult: 70cm to 170cm (28" to 67")

Child: 64cm to 102cm (25" to 40")

Weight Range:

Child: 25-40kg

Adult: >40kg

Buoyancy (minimum): When fully inflated

- Level 100/100N (22.4 lbs)
Level 150/200N (45.0 lbs)
- Level 150/75N (17.0 lbs)
Level 275/280N (63.0 lbs)
- Level 150/150N (33.7 lbs)

4

Inflation System:

Manual Inflation Mechanism:

- For model Atlantic and Explorer jacket/vest the Manual Inflation Mechanism, pull tab and oral tube located on the left side. For all the other models, the Manual Inflation Mechanism and pull tab located on your right side, and the oral tube located on your left side.

Pull Tab:

- The jerk to inflate tab is used to manually activate the inflation mechanism and inflate the PFD. For Atlantic and Explorer jacket model, to manual inflate through pull tab, tear down the chest pocket first.

CO2 Cylinder:

- 24 grams for Level 100/100N
- 38 grams for Level 150/200N
- 33 grams for Level 150/150N
- 60 grams for Level 275/280N

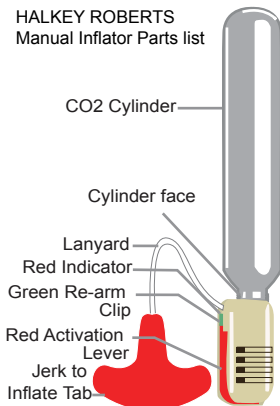
Indicators:

- For the PFD to be fully armed, a cylinder must be inserted into the mechanism and the green re-arm clip must be in place.

Manual Halkey Roberts Inflator Parts List

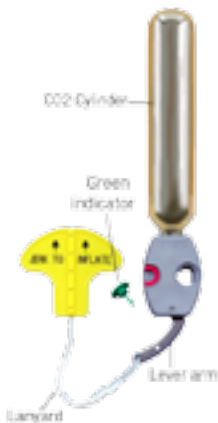
- CO2 Cylinder
- Cylinder Face
- Lanyard
- Green Re-arm Clip
- Red Activation Lever
- Jerk to Inflate Tab

HALKEY ROBERTS Manual Inflator Parts list



840 HALKEY ROBERTS Manual Inflator Part list

- CO2 Cylinder
- Lanyard
- Lever arm
- Green clip indicator
- Jerk to inflate Tab



UML Compact Mini Manual inflator part list

- CO2 Cylinder
- Cylinder face
- Activation lever
- Green re arm clip
- Lanyard
- Jerk to inflate Tab



UML PRO SENSOR MANUAL MECHANISM RE PACKING INSTRUCTIONS:

- CO2 Cylinder
- Cylinder face
- Activation lever
- Lanyard
- Jerk to inflate Tab



Additional Notes on CO2 Cylinders

Failure to properly rearm the inflation mechanism prior to installing the CO2 Cylinder will result in premature activation of the cylinder.

CO2 Cylinders are only good for ONE (1) inflation and cannot be recharged.

CO2 Cylinders are made with a protective coating that may wear off after a period of use or exposure to the environment. When this coating is worn off, the CO2 cylinder may start to show some signs of rusting. If this occurs replace the CO2 Cylinder.

If a gram scale (such as postal scale) is available, it is recommended to weigh the Cylinder to verify that it meets the minimum weight imprinted on the cylinder.

Other Use Guidelines

- Always wear your PFD when underway or making way unless you are inside the cabin. If you need to jump from any height, always fold arms over your chest to keep the PFD in place when entering the water.
- Avoid all unnecessary activities that will be abrasive to the device.
- Use extreme caution around sharp objects.
- Avoid unnecessary exposure to sunlight. See GENERAL PRODUCT LIFE EXPECTANCY.
- CO₂ gas from the cylinder will permeate through the chamber fabric over time. If you are in the water for a long time, it may be necessary to top up the inflatable orally by blowing air through the oral tube.
- Inflatable PFDs are not designed for activities in which the wearer expects to encounter impact with the water at a high speed such as water skiing, riding personal watercraft, etc.
- Inflatable PFDs are not designed for a white water activities.

Why are PFDs Required Safety Equipment?

Drowning are the leading cause of fatalities involving recreational boating. A PFD provides floatation to help keep your head above water, help you stay face up in the water, and increase your chances of survival and rescue. Most adults only need an extra 31 to 53 Newtons (7 to 12 pounds) of floatation to keep their heads above water. The correct size PFD will properly support weight of the wearer. Since this inflatable PFD does not have inherent buoyancy, it provides flotation only when inflated. Familiarize yourself with the use of this PFD so that you will know what to do in an emergency.

Wear Your PFD

In approximately 80% of all boating fatalities, the victims were not wearing a PFD. Most fatal accidents happen on calm sunny days. The Inflatable PFD is much more comfortable to wear than other PFD types. Get into the habit of wearing this PFD. Non-swimmers and children especially should wear a hybrid or non-inflatable PFD at all times when on or near the water.

This Device Is Intended To Help You Save Your Own Life

For your PFD to function properly follow these suggestions to verify that it fits, floats and remain in good condition.

1. Check the status of the inflator and make sure that the green re-arm clip is in place. Check before each outing.
2. Get into the habit of re-arming the inflation mechanism immediately after each CO₂ inflation.
3. This PFDs requires re-arming with a new cylinder after each CO₂ inflation. Always have re-arming kits available to service your inflatable PFDs.
4. Try your inflatable PFD on and adjust it until it fits comfortably in and out of the water.
5. Mark your PFD with your name if you are the only wearer.
6. Do not alter your PFD. If it doesn't fit properly, get one that does.
7. Your PFD is not intended for use as a fender or kneeling pad.
8. If your PFD is wet, allow it to dry thoroughly before storing it.
9. Do not dry your PFD in front of a radiator or other source of direct heat.
10. Do not dry clean.

Additional Information

Remember - Safe Boating is No Accident!

Keep this Owner's Manual in a convenient place on your boat.

READ IT OFTEN!

If you need more information about PFDs and safe recreational boating, contact your state boating authority.

Do Not Attach PFDs To Your Boat

Each PFD has straps, hooks, buckles or other means for securing the device in place on the wearer. Some PFDs also incorporate decorative D-rings or tabs. Such items are not to be used to attach the device to the boat. Attaching the device to the boat will not permit it to perform as intended.

The exception is when a safety harness PFD is worn with tether of less than 2m (6.5 feet) incorporating quick release under load hardware. Refer to HARNESS USE INSTRUCTIONS. Buddy lines, when provided, are to be used by people adrift in the water to attach themselves to one another and aid in staying together. Buddy lines are not designed for lifting.

CO2 Permeation Loss

CO2 gas will permeate the chamber fabric over time. Oral inflation may be necessary to maintain full buoyancy.

Freezing Temperatures

Never use in below freezing temperatures, unless worn partially inflated. At or below 4°C (40°F) inflation time with CO2 gas will be longer. Wearing a partially inflated PFD in these conditions will provide some initial buoyancy while the PFD fully inflates.

CAUTION: Do not fully inflate orally and then inflate with the CO2 cylinder. CO2 inflation after oral inflation will damage the PFD to the point that it will not hold air or float.

Hypothermia

Prolonged exposure to cold water causes a condition known as hypothermia – a substantial loss of body heat, which leads to exhaustion and unconsciousness. Most drowning victims first suffer from hypothermia. The chart shows the effects of hypothermia:

PFDs can increase survival time because they allow you to float without using energy treading water and because of their insulating properties.

Naturally, the warmer the water the less insulation you will require. When operating in cold waters below 15.6°C (60°F) you should consider using a coat or jacket style PFD as they cover more of the body than the vest or belt style PFDs.

HOW HYPOTHERMIA AFFECTS MOST ADULTS

Water Temperature		Exhaustion or Unconsciousness	Expected Time of Survival
°C	°F		
0.3	(32.5)	UNDER 15 Mins	UNDER 15 to 45 Mins
0.3 to 4	32.5 to 40	15 to 30 Mins	30 to 90 Mins
4 to 10	40 to 50	30 to 60 Mins	1 to 3 Hours
10 to 16	50 to 60	1 to 2 Hours	1 to 6 Hours
16 to 21	60 to 70	2 to 7 Hours	2 to 40 Hours
21 to 27	70 to 80	2 to 12 Hours	3 Hours to INDEFINITE
Over 27	Over 80	INDEFINITE	INDEFINITE

Some Points To Remember About Hypothermia Protection

1. Always wear your PFD. Even if you become incapacitated due to hypothermia, the PFD will keep you afloat and greatly improve your chances of rescue.

2. Do not attempt to swim unless it is to reach a nearby craft, fellow survivor, or a floating object on which you can lean or climb. Swimming increases the rate of the body heat loss. In cold water drown-proofing methods that require putting your head in the water are not recommended. Keep your head out of the water. This will greatly lessen heat loss and increase your survival time.
3. Use the standard H.E.L.P position when wearing an inflatable PFD. Wrap your arms around your torso, under the PFD, and draw your legs up to a seated position. Doing so will help you conserve body heat.
4. Keep a positive attitude about your survival and rescue. This will improve your chances of extending your survival time until rescued. Your will-to-live does make a difference.
5. If there is more than one person in the water, huddling is recommended while waiting to be rescued. This action tends to reduce the rate of heat loss and thus increase the survival time.



OPERATION OF YOUR PFD

Instructions For Use Pre-donning Instructions:

Check the following before each use or outing:

1. INSPECT PFD FOR DAMAGE
2. BE SURE A CYLINDER IS INSERTED INTO THE MECHANISM AND GREEN RE-ARM CLIP IS SECURELY IN PLACE.

Inspecting Your PFD For Damage:

Make sure that the PFD is free from rips, tears or punctures. This type of damage on the outside covering indicates that the inflatable chamber may have been exposed potentially damaging elements. If these defects expose the yellow inflatable chamber material, discontinue use of the PFD until you have the PFD inspected by an authorized repair facility. If these defects are noticed but the yellow inflatable Chamber material is not exposed, the inflatable chamber should be checked for leaks.

The inflatable chamber should also be checked for leaks at the beginning of each season and at least every two months during the boating season. The leak test procedure is described under USER'S INSPECTION.

How To Inspect The Mechanism:

The mechanism for model Atlantic & Explorer Jacket is located on your left side under pocket flap, for all other models it is located on your right side under the protective cover. Before inspecting mechanism remove the CO2 cylinder to prevent unnecessary discharge.

The CO2 cylinder contains the gas charge that will inflate mechanism is fired manually only. You must verify that the CO2 cylinder installed is of the correct size specification and has not been previously fired.

Donning Instructions

STEP 1

Wear like a jacket, inserting arms between straps and fabric.



STEP 2

For Model Explorer Jacket/vest zip up front, close waist buckle, adjust for firm fit. For Atlantic and Explorer Jacket jerk tab under pocket flap. For all other models, close front buckle, the jerk to inflate tab should be on your lower right side.



STEP 3

Adjust waist strap through slider located on right side, until comfortable snug fit is obtained. Tuck free end of belt under waist strap. Place crotch strap if applicable between legs and clip into front buckle on waistbelt, adjust to ensure firm fit.



For Harness models, be sure that the bottom of the harness is at least 5cm above the lowest rib.

After donning, locate the jerk to inflate tab for the mechanism. Make sure that you are comfortable locating the Jerk to inflate tab with either hand. Should an emergency develop, be prepared to use it!

Always wear your PFD OVER, not under clothing. Wear as the most outer garment.

CAUTION: Bulky clothing may affect the ability of this PFD to turn the wearer to a face-up position in the water. Practice closing hardware and adjusting straps before use or prior to in-water testing.

Inflated Donning Instructions

Inflatable PFDs can be very difficult to don when fully inflated. Depress Oral inflation Tube valve until the chamber is mostly deflated. Ensure the dust cap is correctly fitted to the oral tube. See DEFLATION INSTRUCTIONS. Don as described on Donning instructions and re-inflate orally as described below. Replace dust cap.

Inflation Instructions

For additional information on testing and inflating your PFD see HOW TO TEST YOUR PFD USING MANUAL & ORAL INFLATOR.

Manual Inflation:

To inflate, grasp the Jerk to inflate tab and pull sharply downward. For model Atlantic and Explorer jacket to manual inflate, tear down the chest pocket first.

Oral Inflation:

The oral tube is located on the wearer's left side. For Model

Atlantic and Explorer Jacket, it is located on the wearer's right side under pocket flap. Grasp the oral tube and bring to mouth. Remove dust cap blow air through the oral tube until the inflatable chamber is firm. If the chamber becomes soft due to CO₂ permeance, oral inflation will be necessary to maintain full buoyancy. Whenever you orally inflate the PFD it is good practice to remove the CO₂ cylinder prior to inflate.

Cold Inflation

Oral inflation may be required in addition to manual inflation if chamber is not firm due to cold temperature at or below 4°C (40°F). Inflation time using CO₂ gas will be longer at these temperatures. See FREEZING TEMPERATURES.

Other Inflation Precaution:

CAUTION:

- Do not fully inflate orally then manually or automatically inflate with the CO₂ cylinder. This will damage the PFD to the point that it will not hold air or float.
- Never inflate this PFD with a Pump or Air Compressor.
- Permeation loss is greater when the device is inflated with CO₂ than with air, and earlier replenishment by means of the oral inflation system will be necessary.

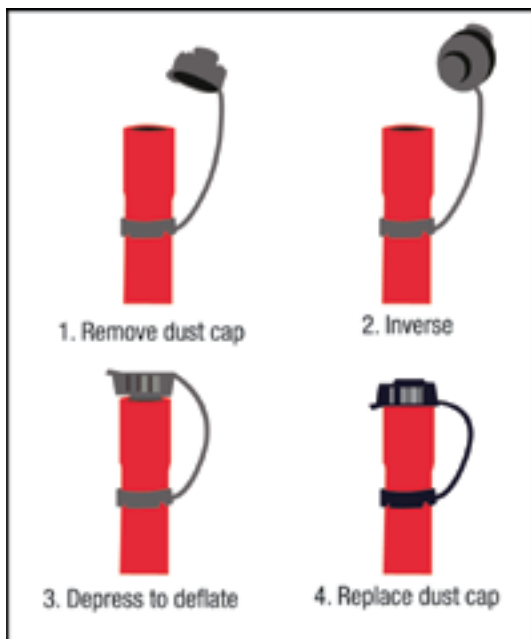
Deflation Instructions

Depress Oral Valve (located inside end of Oral Tube) using the protective dust cap or tab provided by inserting into the end of Oral Tube, see photo at the right side. Gently compress air out of the inflatable chamber while depressing the Oral Valve.

If for any reason the Oral Valve remains open, depress it several times. If it does not release, discontinue use of this PFD and take it to a certified repair station.

In an emergency situation, hold thumb over the valve if it will not close, or fold the oral tube in half and squeeze together. Refer page to REPACKING INSTRUCTIONS.

DO NOT TWIST OR WRING INFLATABLE CHAMBER
TO DEFLATE



Harness Use Instructions

**FAILURE TO FOLLOW THESE INSTRUCTIONS COULD
RESULT IN INJURY OR DEATH**

ALERT!

**THIS SAFETY HARNESS INFORMATION IS FOR
MODEL MYAH ONLY**

- Under no circumstances should the sailing harness be used in any climbing task or related activity. Failure to comply with this restriction in use may result in death or in injury.
- Always adjust harness snugly around your body. Failure to adjust properly may increase chance of injury.
- Only use a tether that is less than 2 meters long and incorporates quick release under load hardware.
- Load indicator shows no broken stitches on



This harness certified to AS2227-2006

- Refer to DONNING INFORMATION.
- The harness should be kept clean, dry and free from oil, grease, sand or grit. Wash in clean fresh water after use, dry and store in an area protected from the elements.
- The harness should be frequently inspected for deterioration.

- This harness is fitted with a load indicator. If the harness has received a severe load it may have activated indicator (broken single stitch) and both the harness and line which was attached at the time should be replaced.
- As lines can be supplied separately from the harness, ensure that the attachment devices on the line are compatible with the attachment point of the harness.

Harness Fit and Sizing Information

Sailing Harness are designed to be worn at the chest area to ensure the least injury potential should the wearer be subject to sudden high shock loads.

FIT: This harness is to be used by wearers 165 cm (5 feet 5 inches) and taller. This restriction is intended to locate the bottom of the harness belt at least 5 cm (2 inches) above the bottom of the rib cage or higher. Please verify that you can achieve this fit with the PFD adjusted comfortably snug.

**DO NOT USE AS A SAILING HARNESS
IF THE HARNESS WEBBING
DROPS BELOW THE RIB CAGE.**

SIZING: Model MYAH PFD fits chest size range of 70cm to 170cm (28" to 67" inches) for wearers 40kg and over.

**Always use D-Ring for securing to a quick release
underloaded tether.**

Ensure that the attachment point is strong and able to withstand a load of at least 12KN.

The D-ring instructions also apply to model EXP-1MD

**NOTE:
MODEL EXP-1MD
IS NOT A SAFETY
HARNESS AND IS
NOT CERTIFIED TO
AS2227-2006**



FOR MODEL MYAH ONLY

Additional Harness Information

- This harness designed and tested to meet the requirements for AS2227-2006 requirements for Sailing Harness.
- It is strongly recommended that first time users of Sailing Harness receive instructions from a reputable dealer, sailing school or otherwise experienced harness sailor.
- Always wear over all other clothing to allow for chamber expansion during inflation.
- A harness that is attached to an anchored tether could overpower floatation and take the wearer down the boat if not used with quick release under load hardware.

Failure to follow these instructions rigorously could result in a non-functioning PFD causing INJURY OR DEATH.

CARE AND MAINTENANCE

Is Your PFD in Good And Serviceable Condition?

Check your PFD between outings to be sure it's correctly armed; free of rips, tears or holes; that all seams are securely sewn; and that the fabric, straps and hardware are still strong.

Inspect the inflatable portion of the PFD in accordance with Care and Maintenance Instructions.

General Product Life Expectancy

The reliability and service life of this PFD depends greatly upon how it is used and cared for. Avoid storing PFD in direct sunlight. Sunlight contains ultraviolet radiation that weakens synthetic materials. Prolonged exposure to high temperatures and high humidity may shorten service life of this PFD. While it is known that these elements degrade the materials, every environment is unique so there is no sure way to estimate how long the PFD will last. It is for this reason that you must follow the care and cleaning instructions and perform the maintenance and service checks. This will assure that the PFD remains functional and will maximize the useful life of this PFD for five years.

Users Inspection

The user should perform the following checks before each season, or before a long journey, or before each outing as recommended.

Physical Inspection of Cover and Straps:

Examine outer shell fabric, seams, webbing attachments, buckles, slides etc. Fabric fading can indicate a loss of strength. Check for strength by pulling seams and attachments snugly. If device shows any signs of damage, return to a certified repair facility or replace the entire device.

Oral Inflation Leak Test:

This test should be performed every two months and at the start of each season. Inflate buoyancy chamber using the oral inflation valve and leave to rest for 16 hours. When buoyancy chamber remains firm and full of air, there is no leakage and chamber is operational. If the chamber deflates during this leak test, immediately bring to a certified repair facility for repair. The device is no longer in operational condition.

Function Test of Oral Valve:

With the PFD inflated, remove the dust protection cap, and test the valve by pushing it down using the tab provided on the cap. The valve should depress easily, and when released it should automatically return to the closed position & reseal.

CARE AND CLEANING INSTRUCTION

Drying:

- If the device is wet, place on a coat hanger to allow thorough drying.
- Do not place in direct sunlight to dry.
- Do not use any heat source.
- Ensure your PFD is thoroughly dry before storage to ensure prevention of damaging mold or fungal growth.

Cleaning:

- Damp wipe only with mild detergent recommended for synthetic fabrics.
- Remove grease and oil immediately.
- After every use, rinse well with fresh water.
- Read instructions provided on the device.

23



DO NOT MACHINE WASH
DO NOT DRY CLEAN
DO NOT MACHINE DRY
DO NOT BLEACH
DO NOT USE SOLVENT
BASED CLEANERS.

Storage

- Store in clean, cool, dry area
- Do not store in direct sunlight

Repair

If you have any question about the condition or integrity of this product call your local agent or distributor. A damaged device must be repaired by a certified repair facility or discarded.

Servicing

Marlin strongly recommended that this device be inspected at least every 5 years from day of purchase by a certified repair facility or your nearest authorized service Centre & agents, visit our for more information and see pages SERVICE CENTRE & AGENTS in our website www.marlin.com.au

Re-arming Kits

Re-arming Kits comprising a fully charged CO2 Cylinder and green Re-arm clip are available from your PFD reseller, or certified Repair facility.

How and Why To Test Your PFD

Inflate your PFD and try it out in the water to:

Make sure it floats you:

- Comfortably (When worn properly)
- Adequately for expected wave conditions
- Body shapes/densities affect performance

Make sure it works:

- A flow of bubbles should not appear
- It should inflate quickly and easily

Learn how it works by:

- Activating the CO2 inflation system
- Re-arming the CO2 inflation system
- Inflating using the Oral Inflator tube

It is recommended that you purchase two Re-arming Kits. One to be used immediately in testing the manual inflation system and the other to carry on board as a spare.

Test your PFD using Manual Inflator?

- To test your inflatable PFD, put on the PFD and adjust correctly.
- Activate the inflation system by jerking firmly downward on the pull tab. PFD should fully inflate within 5-10 seconds.
- Get into shallow water, just deep enough that you can stand with your head above the surface.
- See if the PFD will float you on your back or just slightly back of vertical. In a relaxed floating position, verify that your mouth is well above the water's surface. Note the effect of where you hold your legs on how you float.
- Get out of the water and remove the PFD. Remove the used CO2 from the PFD inflator. Completely deflate the PFD using oral inflator.
- Let the PFD dry thoroughly.
- Re-arm using re-arm kit refer to RE-ARMING
- Repack in accordance with instructions on REPACKING INSTRUCTIONS.

Test Your PFD Using Oral Inflator

- To test your inflatable PFD, you will not need any spare parts or re-arming kits.
- Remove the CO2 cylinder to prevent inadvertent activation of the inflation system, which could potentially damage the PFD.
- Put on the PFD.
- Get into shallow water, just deep enough that you can stand with your head above the surface.
- If you are weak swimmer or non swimmer, partially inflate the PFD so that you are supported well enough to be able to complete inflation without touching bottom, either orally or manually. Note this level of inflation because it is the minimum needed for you to safely use this inflatable PFD.
- Fully inflate the PFD using the oral inflator.
- See if the PFD will float you on your back or just slightly back of vertical. In a relaxed floating position, verify that your mouth is well above the water's surface. Note the effect of where you hold your legs on how you float.
- Get out of the water and remove the PFD. Completely deflate the PFD using the oral inflator.
- Re-arming using re-arming kit.
- Repack in accordance with instructions.

Re-arming Instructions

IT IS RECOMMENDED TO USE
MARLIN AUSTRALIA
RE-ARMING KITS.

Disassembly:

- Unpack or open the PFD so that the Manual Inflator is visible.
- Remove CO2 cylinder by firmly turning cylinder anti-clockwise.
- Discard cylinder if discharged.

Re-arming:

- Rotate Red Activation Lever to closed position.
- Snap Green Re-arm Clip into place over lanyard.
- Install new cylinder by engaging thread and turning clockwise.
- Do not over tighten.



UML MINI MANUAL INFLATOR



Step 1:

Remove the pierced CO2 cylinder by turning it anti-clockwise and discard it in an environmentally friendly manner.



Step 2:

Push the lever back into its slot and clip the new manual indicator in place.



Step 3:

Ensure the black CO2 cylinder seal is fitted correctly.



Step 4:

Ensure the CO2 cylinder cap has not been pierced and then screw it clockwise into the UML Mini Manual. Tighten up, hand tight.

UML PRO SENSOR MANUAL MECHANISM

RE PACKING INSTRUCTIONS:

Do not detach the inflator from the lifejacket

Before commencing the re-arming procedure ensure you have the correct re-arming kit with the correct size of CO2 cylinder and that the lifejacket is dry.

Keep away from fluids.

Step 1:

Remove the pierced CO2 cylinder by turning it anti-clockwise and discard it in an environmentally friendly manner.



Step 2:

Push the lever back into its slot until it clicks into position



Step 3:

Ensure the black CO2 cylinder seal is fitted correctly

Step 4:

Ensure the CO2 cylinder cap has not been pierced and then screw it clockwise into the ProSensor Manual. Tighten up, hand tight.



MECHANISM INDICATORS MUST BE FULLY SHOWING GREEN, THE CARTRIDGE REPLACE BY DATE AND WITH A FULL CO2 CYLINDER SCREWED IN HAND TIGHT FOR CORRECT OPERATION.



RE-ARMING HALKEY ROBERTS 840:

Step1: Unscrew used CO2 cylinder in a counter clockwise direction and immediately discard.

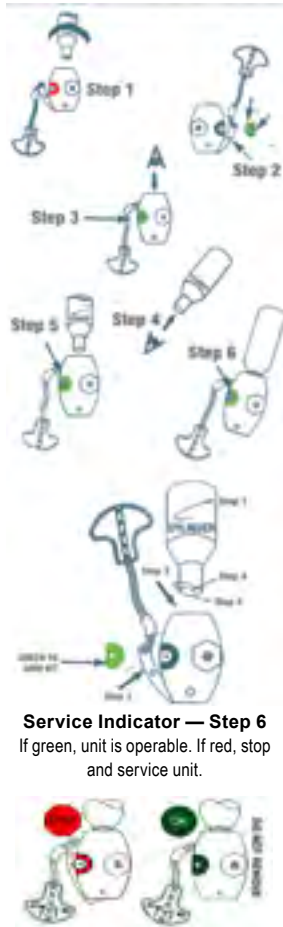
Step 2: Close manual inflator arm within inflator lever within the inflator body and carefully insert new green indicator tab so that it fully covers the red semi-circle on the body.

Step 3: Look into the threaded cylinder receiver and view the gasket. If worn, replace with proper re arm kit.

Step 4: Inspect the face of the new cylinder. Be sure it is smooth and has no holes or scratches. There is a gross weight on the cylinder. If you have any question about cylinder integrity, weigh the cylinder on a small scale, such as a postage scale. Compare the weight printed on the cylinder to the actual weight. If they do not match, get another cylinder.

Step 5: Screw new cylinder in a clock-wise direction firmly into the inflator. Do not overtighten, but ensure the fit is tight.

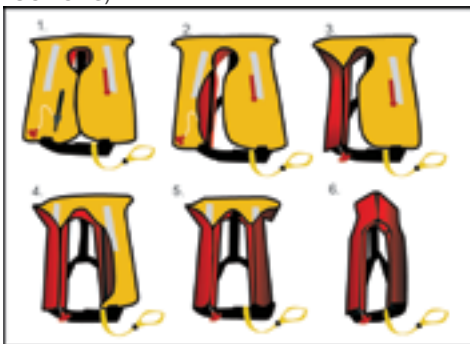
Step 6: Check the inflator arming indicator every boating trip. It will tell you if there is a need for service. Check the cylinder face regularly to ensure it is not punctured.



Repacking Instructions

1. Lay device out flat (all air removed) with the yellow inflatable chamber up.
2. Fold left inside edge over as shown, exposing touch fastener strip.
3. Fold left outside edge over, securing touch fastener strips to touch fastener strips. Position jerk to inflate tab below bottom edge of PFD as shown ensuring jerk tab is hanging free.
4. Fold right inside edge over, exposing touch fastener strips.
5. Fold right outside edge over, securing touch fastener strips to touch fastener strips.
6. Fold right topside over, securing touch fastener strips.
7. Fold left topside over, securing touch fastener strips.
8. Check to see that the jerk to inflate tab and lanyard is hanging free from the inflator.

Note: For model Explorer and Atlantic Jacket deflate the yellow inflatable chamber through oral tube under pocket flap. Lay jacket out flat and fold as a normal garment. (See DEFLATION INSTRUCTIONS)



SELF SERVICE INSTRUCTIONS

It is recommended that an accredited service agent conducts a full inspection of your PFD every 5 years from day of purchase. Read/Print this owner's self-inspections manual in conjunction with Owner's Manual

1. Read the following instructions carefully. If you require any assistance regarding self-servicing of your inflatable PFD you are advised to contact one of our accredited service centers for advice.

The self-service instructions are for Marlin manufactured PFD's for recreational use only not for commercial. If PFD is used commercially, servicing should only be by an authorized accredited service center every 12 months..

2. The green firing indicator located on the side of the CO2 inflation mechanism will be broken, ensure you have purchased green firing indicators before starting, as well as CO2 cylinders and automatic cartridge/bobbins.

Bobbin should not be older than 3 years - all these parts are available through Marlin retailers or authorized certified service centers.

3. Always use the Marlin self-inspection certificate to maintain a record of the inspection/service.

WARNING:

If a component fails any of the inspection steps or indeed the PFD fails to operate - the PFD must be replaced or the faulty component replaced before further use. In this circumstance the PFD must be sent to Marlin authorized accredited service center for further tests to be conducted.

WARNING:

You must not repair any part of the PFD during inspection/service.



Inspection 1:

1.1 General Visual Inspection

- A. No wear or damage to the outer cover of the PFD
- B. Outer cover closure is not working (zipper if applicable or hook/loop)
- C. No damage to webbing straps
- D. Buckle operation is correct (open and close buckle)
- E. Load indicator thread is not broken if applicable

1.2 Open outer cover and check

- A. Oral inflation tube has no damage.
- B. Whistle (Blow to check operation)
- C. Grab strap no visual damage
- D. Retro reflective tape is firmly attached and not damaged.

1.3 Models fitted with integral safety harness check that all harness components have no visible damage or excessive wear.

- A. Check webbing
- B. Stainless steel buckles
- C. Stainless steel D-Ring
- D. Stitching
- E. Load indicator for broken stitch
- F. Grab strap
- G. Whistle attachment
- H. Crotch strap/Holding down strap

Inspection 2:

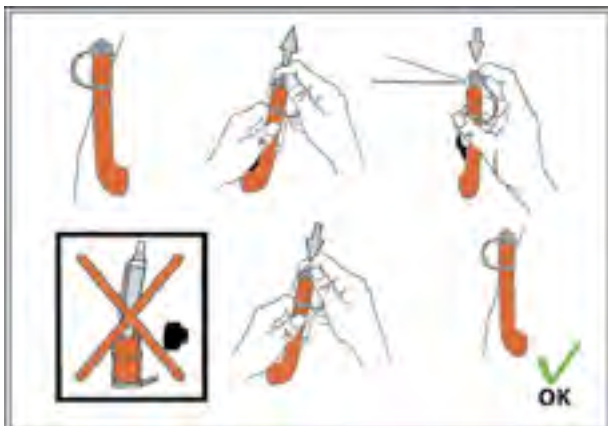
1.1 Inspection of the Bladder

- A. Open cover and inspect bladder has no signs of excessive abrasion or wear. Pay extra attention to folds and area around inflation systems.
- B. Inflate bladder by using red oral tube. Leave the inflated PFD 12hrs in a room with stable temperature of around 20°C. If the temperature goes down overnight, this will affect pressure. Check there is no loss of pressure and no visible damage to the bladder.



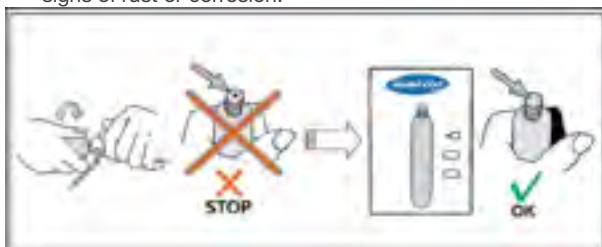
If the bladder is damaged or the pressure falls, the PFD must be replaced or sent to an accredited service station for further tests. Under no circumstances must you attempt to repair the PFD.

Inspection of oral tube and its valve. Check oral tube and inflation head operate correctly. Deflate the life jacket by inverting the cap and placing the tab onto the top of the oral tube. Press cap gently to expel air. When PFD is fully deflated replace cap to normal position. Do not put anything other than the inverted cap down the oral inflation tube to deflate as foreign objects may damage the inflation head



Inspection 3:

Inspection of CO2 Cylinder. Check that correct type/size of CO2 cylinder is fitted to the inflation head (printed on the bladder near inflation head or the cylinder/inflation head protective cover). Remove the CO2 cylinder by unscrewing it counter clockwise and inspect thoroughly it should be intact with no rust or corrosion. Replace the cylinder if the end cap has been pierced, it is damaged or the cylinder exhibits signs of rust or corrosion.



If the CO₂ cylinder is serviceable check weight of the cylinder on a kitchen or postal scales to ensure that the weight of the cylinder corresponds to the minimum gross weight engraved on the cylinder, (GR.WT) ± 2 g. If the weight is incorrect or the cylinder is in any way defective it must be replaced. (A replacement cylinder should also be checked in the same manner). Record engraved GR.WT. and actual weight of cylinder on your self inspection certificate.

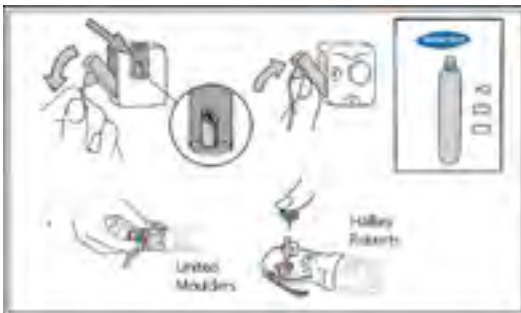
NB! Make sure that all scraped CO₂ cylinders are disposed of at once.

Inspection 4:

With the cylinder removed, pull the manual lanyard sharply to ensure that the lever moves freely, and that the piercing cutter appears undamaged. If the lever moves freely and the piercing cutter appears undamaged, rearm the head by folding back the lever into the normal position and secure with a new green firing indicator clip if you green clip is missing or damaged.

If the head does not operate properly, or if you are concerned about the operation of the mechanism, you must send the PFD to an accredited service gent for inspection and further action.





DO NOT USE ANY TOOL OR UNDUE FORCE

WARNING:

When replacing with a new CO2 cylinder the new cylinder should be inspected as per Instruction 4. Forth piercing cutter to work correctly both the CO2 cylinder and automatic head (when fitted) must be firmly hand-tightened onto inflator valve.

Inspection 5:

Record service inspection on your PFD. If the PFD has passed all applicable self inspection instructions described in Instructions 1 through 7, using permanent laundry marker Sign and date the Service Inspection label located on the inflation valve side of the PFD bladder.

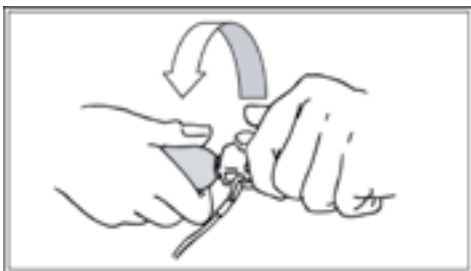
Format for dating a self inspection should be SI-YY-MM (the prefix SI is to indicate self inspection) For example for a self inspection completed in August 2010 service schedule should show SI-10-08

Inspection 6:

Repack PFD according to model instructions as described in your PFD owners manual, make sure the manual pull lanyard is not tangled and that the lanyard knob is hanging outside the PFD cover.

Inspection 7:

Certify PFD inflatable Self Inspection Certificate. Sign self inspection certificate and record the date self inspection was completed. It is also recommended that the next inspection due date is noted in space provided and that the signed and dated certificate is placed in boat's safety equipment log for future reference.



SERVICE CENTERS & AGENTS

NSW

Bulbeck Marine

33-43 Fern Street,
Islington NSW 2296

T: 02 4961 3011

Bulbeck Marine

12 Ralph Black Drive,
Wollongong NSW 2500

T: 02 4226 6917

Marine Safetyworks

110 Ingrid Road, Kareela

NSW 2232

T: 02 9576 6065

M: 0402 294 490

info@marinesafetyworks.

com.au

Sussex Marine

5 Flood Ave

Sussex Inlet NSW 2540

T: 02 4441 2791

Newcastle address

Bulbeck Marine

4 Channel Road,

Mayfield West

NSW 2304

T: 02 4961 3011

Be Safe Marine

12 23b-27 Pine Ave

Brookvale 2100

T: 0412 622 555

All Inflatable Boats

162 Harbord Road,
Brookvale, NSW 2100

PH - 02 9905 7532

Mob - 0408 973 981

bob@allinflatableboats.

com.au

Nowra Boats Pty Ltd

ABN: 22168032755

6/10 Central Ave, South
Nowra NSW 2541 Australia

Ph: 02 4422 1999

Fax: 02 4422 3666

info@nowrapowerboats.

com.au

VIC

Dive and Dive

878 Springvale Road

Braeside VIC 3135

T: 03 9769 0145

Survival Offshore Systems

Melbourne

1/273 Williamstown Road Port

Melbourne, Vic 3207

T: 03 96465001

help@survival.com.au

Survival Offshore Systems

Gippsland

3/77 Rodgers Street

Yarram, Vic 3971

T: 03 51826880

help@survival.com.au

Clover Lodge Supplies & Services

41 Allan Street

Warrnambool VIC 3280

Tel: 0419 593 960

cloverlodgeservices@

bigpond.com

QLD

J & G LIFE JACKET

SERVICING

2/3 Corowa Court

Mooloolaba Qld 4557

Mob.0407 042 725

MarineSafe Australia

21 Rowland Street

Slacks Creek QLD 4127

T: 07 3808 1988

ACT/

SOUTHERN NSW

ACT Inflatable Lifejacket

Services

14 Chevalley Loop

Gordon ACT 2906

M: 0400 078770

SA

PFD Servicing SA

Level 1/84 Hindley Street

Adelaide SA 5000

P: 0497 804 266

P: 0418 222 759

sa@pfdservicing.com.au

WA

Fendercare Marine Australia

23 Sparks Road

Henderson

Western Australia 6166

Australia

T: 089 4129 999

F: 086 4989 899

Survival Offshore

Systems

Perth 2/9 Adams Street

O'Connor, WA 6163

08 93141022

perth@survival.com.au

Holdfast Offshore & Safety

Cnr of Capo D'Orlando Drive

& Mews Road

Fremantle, 6160

08-9331-1177



MARLIN INFLATABLE PFD ANNUAL SELF INSPECTION CERTIFICATE

Applicable for inflatable PFD's in recreational use only

Before you start please read Marlin Annual Self Inspection and Service Instructions. Record each inspection instruction as described in the steps on the this certificate as it is completed. If the PFD or a component of the PFD fails any of the checks listed in Instructions 1-6 the PFD or the faulty component must be replaced before further use, alternatively the PFD should be sent to an accredited service agent for further inspection.

Under no circumstances must you attempt any repairs yourself.

Batch Number (mark clearly 8 numbers):

It is printed on the back of the inflatable PFD, at the bottom of the warning label Example: BATCH No. 1501-1234.

Model:

Last serviced date
or date of purchase
if no service

YY

MM

Check Status at each Instruction by marking box	Pass - YES	NA - Not Applicable	Fail - NO
Inspection 1	PASS	NO	NA
1.1 General visual inspection			
1.2 Open outer cover and check			
1.3 Harness component			
Inspection 2	PASS	NO	NA
2.1 Check bladder for abrasion wear			
2.2 Performed bladder leakage test			
Inspection 3	PASS	NO	NA
3.1 Operation of mouth inflation tube and valve			
Inspection 4	PASS	NO	NA
4.1 CO2 Cylinder for damage or corrosion			
4.2 Check weighed cylinder			
Record engraved GR.WT Actual Weight			
Inspection 5	PASS	NO	NA
5.1 Operation of inflation head and secured new firing indicator clip If Its lost or damaged.			
Inspection 6	PASS	NO	NA
6.1 Expiry date and green indicator is in place United Moulders			
6.2 Expiry date and green indicator is in place Halkey Roberts			
Inspection 7			
7.1 Refit inspected or new CO2 Cylinder (Refer Instruction 4)			
Inspection 8			
8.1 Sign and date PFD service schedule attached to PFD			
Inspection 9			
9.1 Repack PFD (Refer: Owners Instructions manual supplied with PFD)			
Inspection 10			
I hereby certify that this PFD has been inspected and serviced in accordance with the Marlin Annual Self Inspection and Service Instructions describe in Instructions 1 through 9.			
			Next Inspection Due
..... Name Signature Date	
..... Address			



MARLIN INFLATABLE PFD ANNUAL SELF INSPECTION CERTIFICATE

Applicable for inflatable PFD's in recreational use only

Before you start please read Marlin Annual Self Inspection and Service Instructions. Record each inspection instruction as described in the steps on the this certificate as it is completed. If the PFD or a component of the PFD fails any of the checks listed in Instructions 1-6 the PFD or the faulty component must be replaced before further use, alternatively the PFD should be sent to an accredited service agent for further inspection.

Under no circumstances must you attempt any repairs yourself.

Batch Number (mark clearly 8 numbers):

It is printed on the back of the inflatable PFD, at the bottom of the warning label Example: BATCH No. 1501-1234.


Model:

Last serviced date
or date of purchase
if no service

YY

MM

Check Status at each Instruction by marking box	Pass - YES	NA - Not Applicable	Fail - NO
Inspection 1	PASS	NO	NA
1.1 General visual inspection			
1.2 Open outer cover and check			
1.3 Harness component			
Inspection 2	PASS	NO	NA
2.1 Check bladder for abrasion wear			
2.2 Performed bladder leakage test			
Inspection 3	PASS	NO	NA
3.1 Operation of mouth inflation tube and valve			
Inspection 4	PASS	NO	NA
4.1 CO2 Cylinder for damage or corrosion			
4.2 Check weighed cylinder			
Record engraved GR.WT Actual Weight			
Inspection 5	PASS	NO	NA
5.1 Operation of inflation head and secured new firing indicator clip If Its lost or damaged.			
Inspection 6	PASS	NO	NA
6.1 Expiry date and green indicator is in place United Moulders			
6.2 Expiry date and green indicator is in place Halkey Roberts			
Inspection 7			
7.1 Refit inspected or new CO2 Cylinder (Refer Instruction 4)			
Inspection 8			
8.1 Sign and date PFD service schedule attached to PFD			
Inspection 9			
9.1 Repack PFD (Refer: Owners Instructions manual supplied with PFD)			
Inspection 10	<div>I hereby certify that this PFD has been inspected and serviced in accordance with the Marlin Annual Self Inspection and Service Instructions describe in Instructions 1 through 9.</div> <div> <div>Name</div> <div>Signature</div> <div>Date</div> </div> <div>Address</div>		
		<div>Next Inspection Due</div>	



**IMPORTANT MESSAGE:
CHECK THAT A CO2 BOTTLE IS
FIRMLY SEWED INTO MECHANISM
BEFORE DONNING.**

marlin

PO BOX 175, ST PETERS,

NSW 2044 AUSTRALIA

Phone: +61 2 9557 3999

Email:

Sales@marlin-australia.com.au

REVISED051216